



IS SERIES

96, 144 & 196

S-TURN GARMENT FINISHER

AVAILABLE IN GAS OR STEAM MODELS

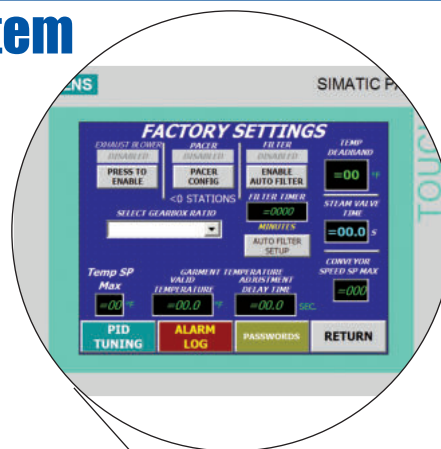


LEONARD AUTOMATICS, INC.

"our reputation is stainless"®

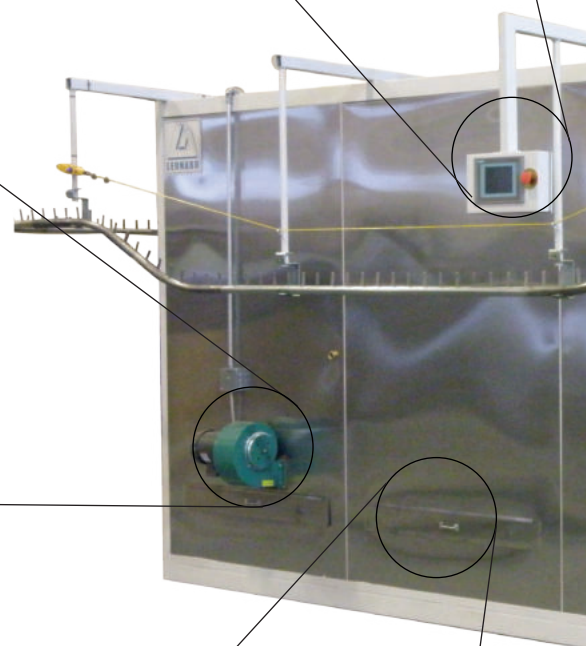
PLC Control System

Leonard Automatics is proud to feature the **PLC Interface Control Center** on our IS Series tunnel finishers. The touch screen allows for intuitive and straightforward access to all tunnel operational controls. Features include automated troubleshooting, maintenance schedules, alarm logs, PM schedule, runtime history and much more. **Total tunnel control** is now at your fingertips.



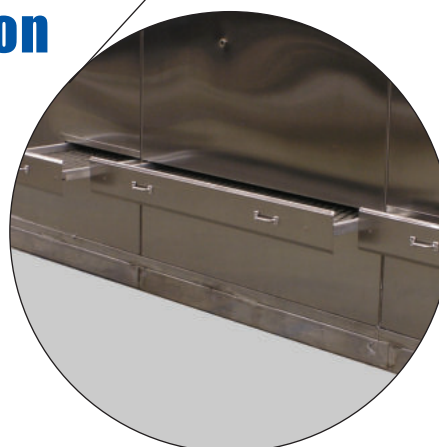
Durable

Just like the rest of our tunnels, the IS Series is constructed of stainless steel panels to provide the high level of corrosion resistance needed for continued operation in the extreme environment of an industrial laundry.



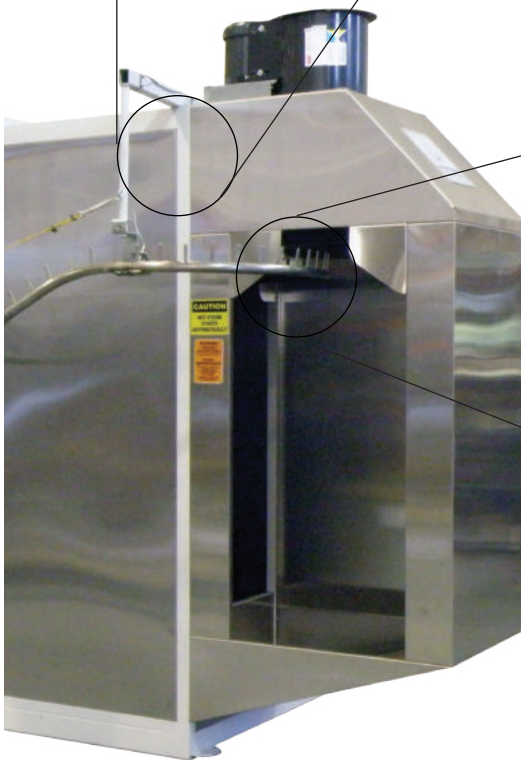
Easy Filtration

The lint filters on the IS Series are accessible from **outside the tunnel** so that important filter maintenance can be performed easily without shutting down the tunnel. The filter screens are made with stainless steel mesh to help remove lint from the air flow.



Innovation

Several design features have been combined to form the steam zone for the **IS Series** finisher. This new “S-Turn” design provides superior quality in the same footprint of previous designs. Executing two back-to-back 90 degree turns, the garments fan open exposing their centers to direct steam injection. The result is deeper penetration of steam to the center of the garment and better saturation of the fibers to facilitate the finishing process.



S-Turn Technology

The finishing of a garment starts **in the steam chamber**. The design of our steam header creates a higher velocity of steam that carries more energy and achieves proper finishing temperature faster. More steam heat is delivered to the garment resulting in **better temperature** rise without increasing floor space requirements. The steam tube configuration fully surrounds the garment with steam.

Additional IS Series Features and Options

Automated troubleshooting - Automated maintenance scheduling and prompts - Password Protected Admin Functions - Maintenance history - Automated over-temperature shut-down - Lint filter monitoring - Ethernet module - Factory installed exhaust system - External steam header - External wiring - Garment Processing Formulas - Adjustable air louvers - Infrared temperature control - Missed Plow Off Safety Switch - Pacer Production Management System - UL Listed Control Panel



TECHNICAL SPECIFICATIONS

	IS-96SH	IS-96GH	IS-144SH	IS-144GH	IS-196SH	IS-196GH
Machine Size						
Length (in/mm)	132 / 3,353	132 / 3,353	179 / 4,547	179 / 4,547	225 / 5,715	225 / 5,715
Width (in/mm)	60 / 1,524	60 / 1,524	60 / 1,524	60 / 1,524	60 / 1,524	60 / 1,524
Height (in/mm)	102 / 2,590	102 / 2,590	102 / 2,590	102 / 2,590	102 / 2,590	102 / 2,590
Weight (lbs/kg)	2,900 / 1,318	2,900 / 1,318	3,500 / 1,590	3,500 / 1,590	4,000 / 1,818	4,000 / 1,818

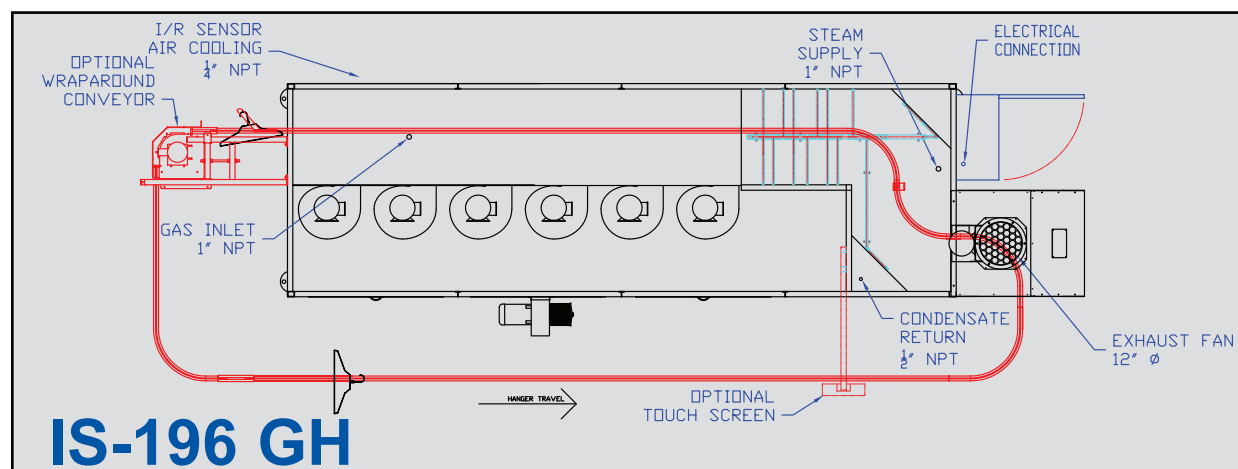
Electrical Service						
Standard Voltage	230 or 460v / 60hz / 3ph					
Full Load Amps	15 / 9	15 / 9	35 / 19	35 / 19	40 / 21	40 / 21

Steam Requirements						
Usage (bhp/hr)	20	10	22.5	10	25	10
Usage (kg/hr)	313	157	352	157	391	157
Maximum Pressure (psi)	125	125	125	125	125	125
Steam Line (in)	1	1	1.5	1	1.5	1
Return Line (in)	0.5	0.5	0.75	0.5	0.75	0.5

Gas Requirements						
Operating Pressure (w.c)	n/a	8.7	n/a	8.7	n/a	8.7
Operating Pressure (mb)	n/a	22	n/a	22	n/a	22
Burner Rating (btu/hr)	n/a	1,000,000	n/a	1,000,000	n/a	1,000,000
Burner Rating (kW)	n/a	293	n/a	293	n/a	293
Average Usage (btu/hr)	n/a	150,000	n/a	220,000	n/a	292,000
Average Usage (kW)	n/a	44	n/a	65	n/a	86

Ventilation Requirements						
Exhaust Duct Size (in/mm)	12 / 305	12 / 305	12 / 305	12 / 305	12 / 305	12 / 305

*Please consult layout drawings for detailed dimensions including conveyor, control panels and utility connections.
Specifications subject to change without notice.
Manufactured in the U.S.A.
Updated: 02/27/2017

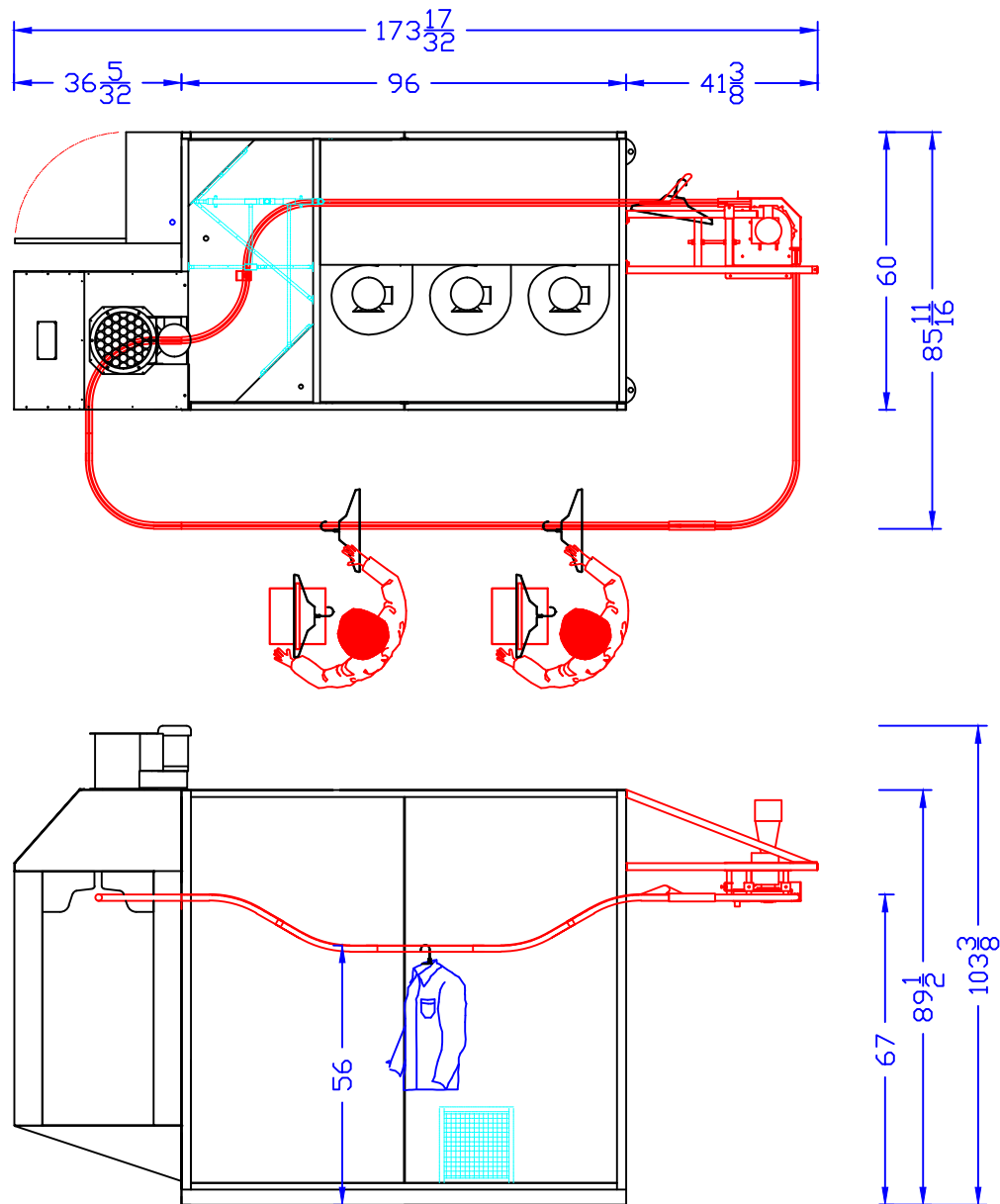


The product may be covered by one or more of the following patents: Patent No: 7,845,037; 6,862,744; 6,910,291; 7,845,197; 6,311,526.
Further patents may be pending.
The color stainless steel is a registered trademark of Leonard Automatics, Inc.



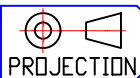
5894 Balsom Ridge Rd. / PO Box 501 Denver, NC 28037
ph: 704-483-9316 / fx: 704-483-4538
sales@leonardautomatics.com - <http://leonardautomatics.com>

- Tubular steel construction
- Pre-processing chamber with 12" exhaust fan
- Stainless steel insulated panel construction
- Stainless steel floor and base
- S-Turn steam injection zone
- Approximately 20% more steam injection than comparable models
- Capable of approximately 25% higher fabric heat rise in the S-Turn steam injection system as compared to traditional models
- Eclipse Combustion natural gas heating system
- Approximately 10% more linear heating distance than comparable models
- High velocity balanced airflow
- Adjustable airflow louver system
- External lint filter access
- Transporter stainless steel conveyor and stainless steel chain
- Variable speed inverter driven conveyor
- Easy access to all parts
- UL listed control panel
- Leonard Automatics support



DRAWING NAME

MODEL IS96LH-GH
FINISHING TUNNEL



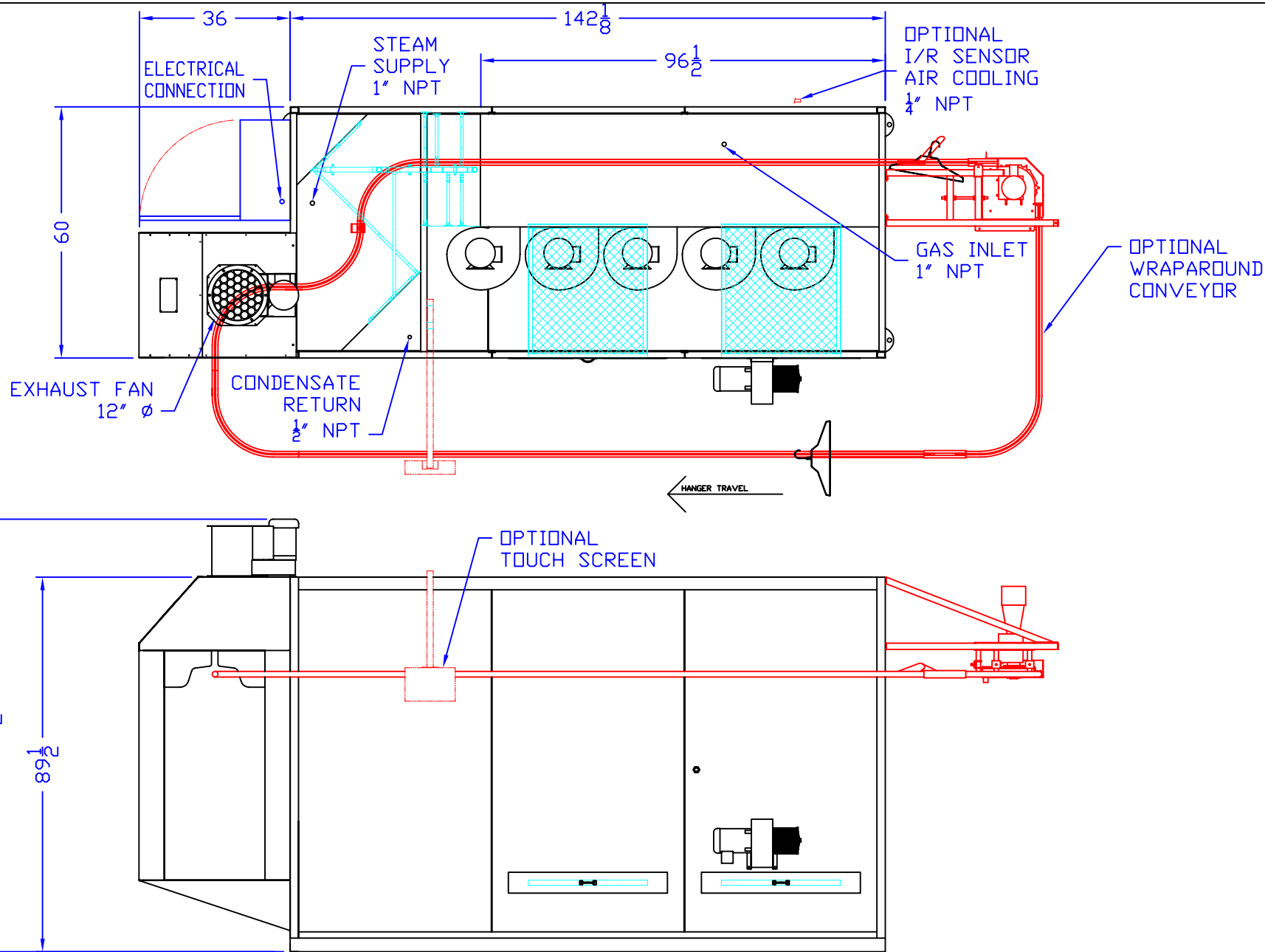
DESIGNED	DJF
CHECKED	
APPROVED	
SCALE	NTS
DRAWING NUMBER	
IS96LH-GH	

DRAWING REVISIONS

REV#	DATE	BY	DESCRIPTION
-	4/23/10	DJP	CREATED DRAWING
A	4/27/10	SPM	UPDATED MACHINE GEOMETRY
B	4/28/10	DJF	UPDATED MACHINE GEOMETRY - CV
C	10/21/10	DJF	UPDATED MACHINE GEOMETRY - CV
D	08/03/11	DJP	Lowered loading area height to 56"

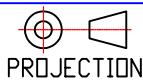
This document is the property of Leonard Automatics, Inc. It has been prepared to provide information to our client, for their decision making and approval process. Any other uses, without the express written permission of Leonard Automatics, Inc. is prohibited. Furthermore, any reproduction of this document, without the express written permission of Leonard Automatics, Inc. is also prohibited.

DWG IN INCHES



DRAWING NAME CLIENT

MODEL IS144LH-GH FINISHING TUNNEL



PROJECTION

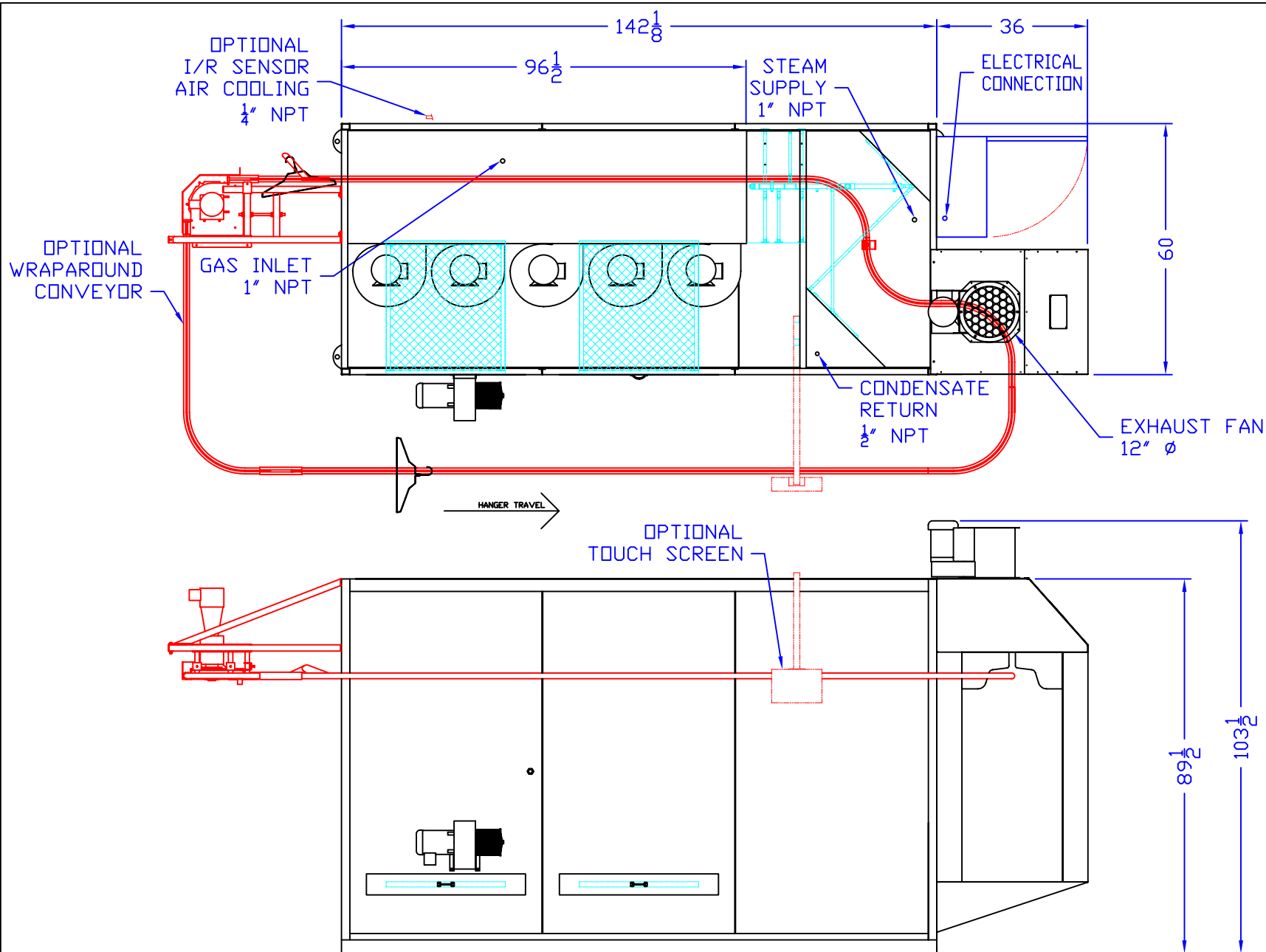
SPM	NTS
SCALE	DRAWING NUMBER
IS144LH-GH	

DRAWING REVISIONS

REV#	DATE	BY	DESCRIPTION
-	08/22/07	SPM	CREATED DRAWING FROM IS144LH
A	06/04/08	SPM	UPDATED FILTERS & PRE-STEAM CHAMBER; MOVED CIRCULATION BLOWER
B	11/16/09	SPM	UPDATED COMBUSTION BLOWER & CONVEYOR GEOMETRY
C	01/26/10	SPM	ADDED PEEPSIGHT; UPDATED FILTERS AND COMBUSTION BLOWER

This document is the property of Leonard Automatics, Inc. It has been prepared to provide information to our client, for their decision making and approval process. Any other uses, without the express written permission of Leonard Automatics, Inc. is prohibited. Furthermore, any reproduction of this document, without the express written permission of Leonard Automatics, Inc. is also prohibited.

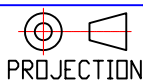
DWG IN INCHES



DRAWING NAME

CLIENT

MODEL IS144RH-GH
FINISHING TUNNEL



PROJECTION

SPM

DESIGNED

APPROVED

SCALE

NTS

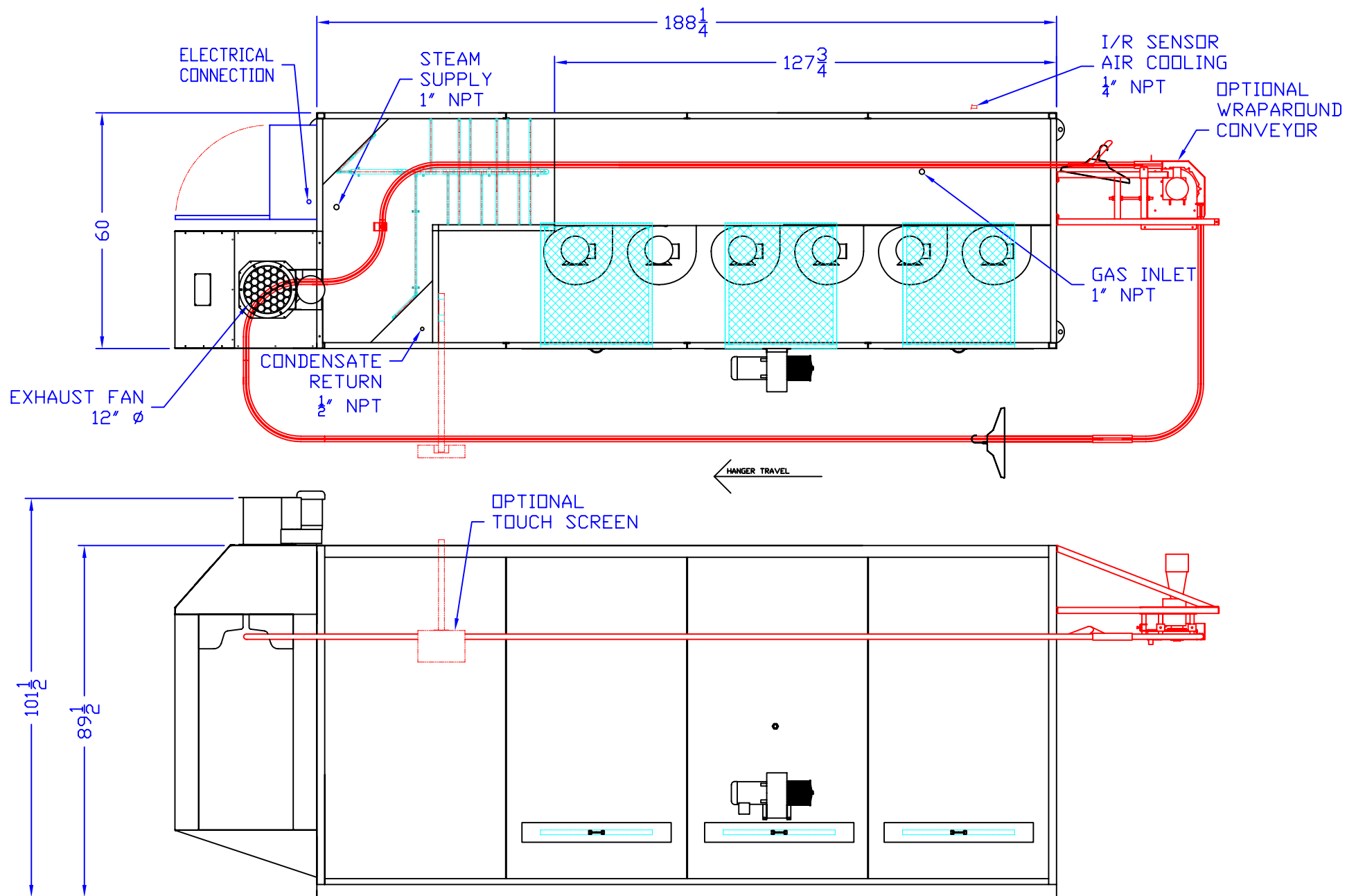
DRAWING NUMBER
IS144RH-GH

DRAWING REVISIONS

REV#	DATE	BY	DESCRIPTION
-	08/22/07	SPM	CREATED DRAWING FROM IS144RH
A	06/04/08	SPM	UPDATED FILTERS & PRE-STEAM CHAMBER; MOVED CIRCULATION BLOWER
B	11/17/09	SPM	UPDATED COMBUSTION BLOWER & CONVEYOR
C	01/26/10	SPM	ADDED PEEPSIGHT; UPDATED FILTERS AND COMBUSTION BLOWER

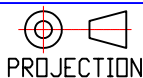
This document is the property of Leonard Automatics, Inc. It has been prepared to provide information to our client, for their decision making and approval process. Any other uses, without the express written permission of Leonard Automatics, Inc. is prohibited. Furthermore, any reproduction of this document, without the express written permission of Leonard Automatics, Inc. is also prohibited.

DWG IN INCHES



DRAWING NAME CLIENT

MODEL IS196LH-GH FINISHING TUNNEL



PROJECTION

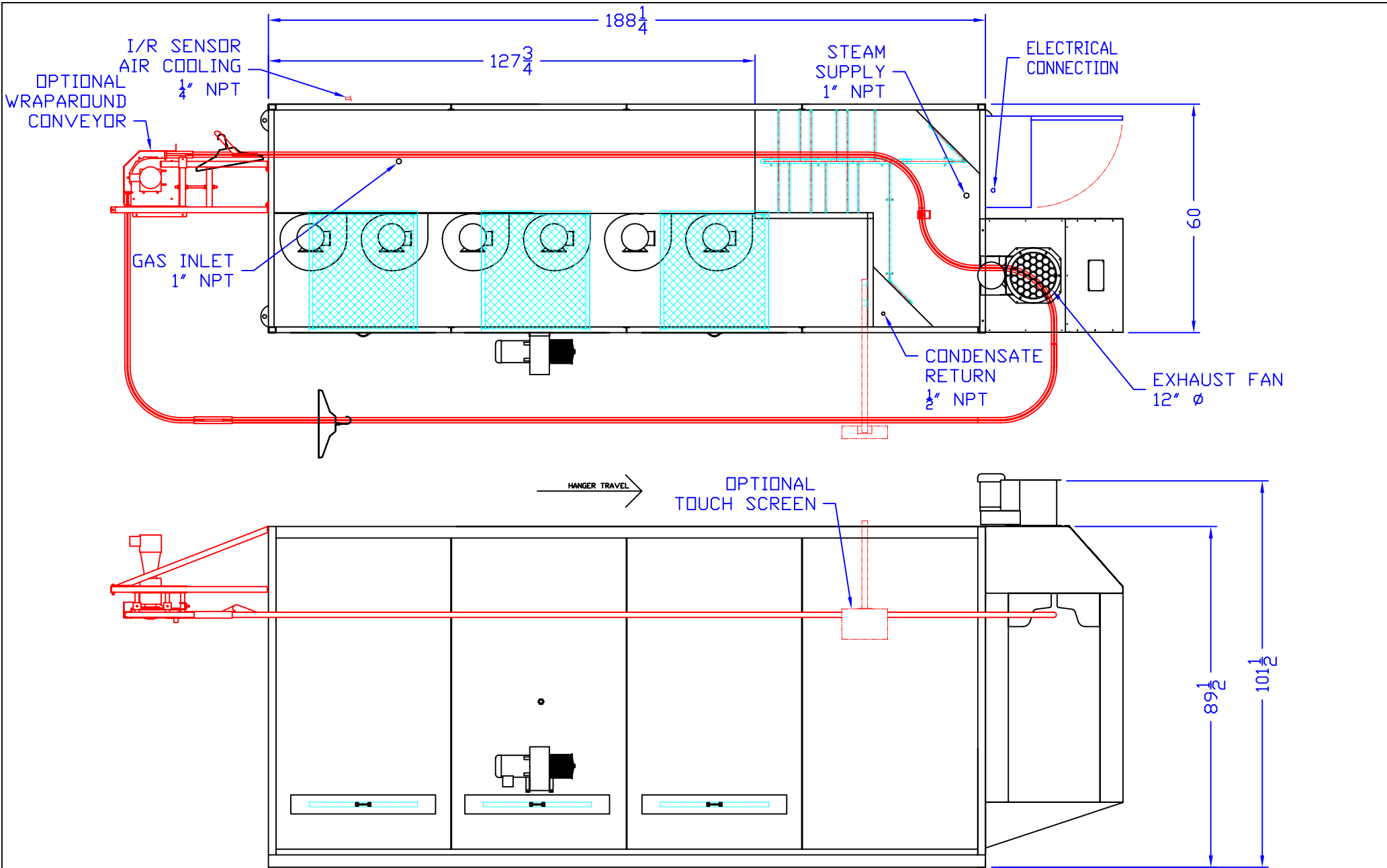
SPM	BY	DATE	DESCRIPTION
—	—	06/04/08	SPM CREATED DRAWING
—	—	11/17/09	SPM UPDATED COMBUSTION BLOWER & CONVEYOR
—	—	01/26/10	SPM ADDED 3RD FILTER AND PEEPSIGHT
SCALE	NTS		
DRAWING NUMBER			
IS196LH-GH			

DRAWING REVISIONS

REV#	DATE	BY	DESCRIPTION
—	06/04/08	SPM	CREATED DRAWING
A	11/17/09	SPM	UPDATED COMBUSTION BLOWER & CONVEYOR
B	01/26/10	SPM	ADDED 3RD FILTER AND PEEPSIGHT

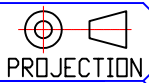
This document is the property of Leonard Automatics, Inc. It has been prepared to provide information to our client, for their decision making and approval process. Any other uses, without the express written permission of Leonard Automatics, Inc. is prohibited. Furthermore, any reproduction of this document, without the express written permission of Leonard Automatics, Inc. is also prohibited.

DWG IN INCHES



DRAWING NAME CLIENT

MODEL IS196RH-GH
FINISHING TUNNEL



PROJECTION

SPM
DESIGNED
APPROVED
SCALE NTS
DRAWING NUMBER
IS196RH-GH

DRAWING REVISIONS

REV#	DATE	BY	DESCRIPTION
-	06/04/08	SPM	CREATED DRAWING
A	11/18/19	SPM	UPDATED COMBUSTION BLOWER & CONVEYOR
B	01/26/10	SPM	ADDED 3RD FILTER AND PEEPSIGHT

This document is the property of Leonard Automatics, Inc. It has been prepared to provide information to our client, for their decision making and approval process. Any other uses, without the express written permission of Leonard Automatics, Inc. is prohibited. Furthermore, any reproduction of this document, without the express written permission of Leonard Automatics, Inc. is also prohibited.

DWG IN INCHES